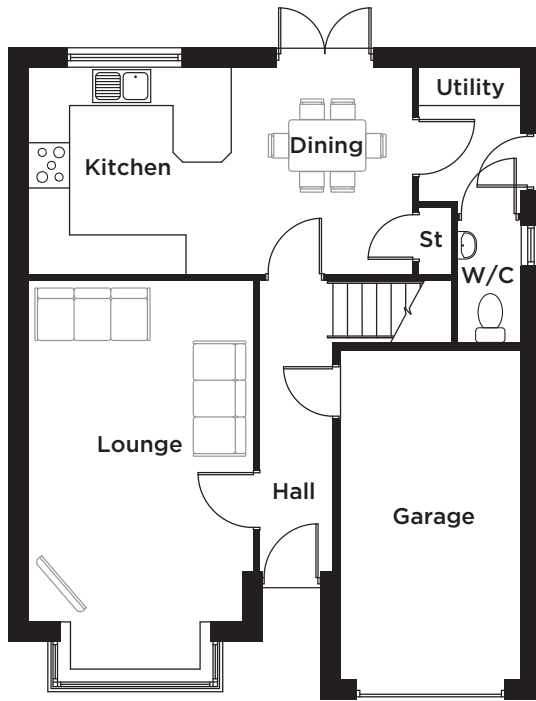


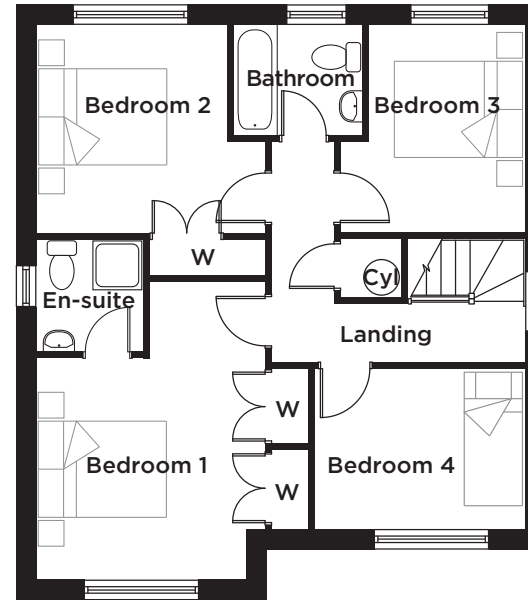
THE MAIDSTONE

4 Bedroom Detached Home



GROUND FLOOR

LOUNGE	3.43m x 5.92m	11'3" x 19'5"
KITCHEN/DINING	5.91m x 3.17m	19'4" x 10'4"
UTILITY	1.55m x 2.06m	5'1" x 6'9"
W/C	0.95m x 1.86m	3'1" x 6'1"



FIRST FLOOR

BEDROOM 1	3.52m x 4.58m	11'6" x 15'1"
EN-SUITE	1.75m x 1.66m	5'9" x 5'5"
BEDROOM 2	3.53m x 3.21m	11'7" x 10'6"
BEDROOM 3	2.86m x 3.21m	9'4" x 10'6"
BEDROOM 4	3.26m x 2.46m	10'8" x 8'1"
BATHROOM	2.00m x 1.70m	6'6" x 5'7"

Please note: All sizes shown are Maximum room dimensions and exclude wardrobes